

# SELECTIVE CONFORMAL COATING AND DISPENSING SOLUTIONS

## MINI SPOOL VALVES (HIGH VISCOSITY AND PRESSURE)



### MINI SPOOL VALVES CFH22

The CFH22 Miniature Spool Valve is based on a balanced spool design to create a fast "ON/OFF" fluid dispensing function that is not affected by material input pressure. The spool action displaces a portion of the material back into the nozzle during shut off. This creates an automatic "suck-back" anti-drip feature. An oil chamber is provided for use above the upper seal to create an additional liquid seal that will prevent moisture from being carried onto the spool. The design facilitates easy maintenance without the need for special tools. The valve is designed to be opened by air pressure and closed by a return spring (single acting). A port is provided so that the valve may be connected for air closing without the spring (double acting).

The CFH22 Mini Spool Valve is designed for higher accuracy with lower pressures. This valve option operates similar to the CFH20SS just in a smaller size.

### FEATURES

- Precise and consistent shot sizes
- Handless higher fluid pressure than most of other valves
- Automatic suck-back after every dispense cycle
- Suitable with moisture-sensitive materials



<b>Fluid Inlet Port:</b>	1/8" NPT Female
<b>Fluid Outlet Port:</b>	Luer Lock Male
<b>Aux Air Inlet Port:</b>	10-32 UNF
<b>Activation Pressure:</b>	70 psi (4.8bar) Min
<b>Max Fluid Pressure:</b>	500 psi (34.5 bar)
<b>Mounting Port:</b>	¼"-20 UNC-2B
<b>Viscosity Range:</b>	1-1 000 000cps
<b>Wetted Parts:</b>	303 SS, Teflon®, Aluminum, EPR
<b>Operating Frequency:</b>	500+ cycles/min



MATERIALS: CONFORMAL COATINGS, ACRYLICS, URETHANES, SILICONES, RTV, BI-COMPONENT MATERIALS, ETC.



# SELECTIVE CONFORMAL COATING AND DISPENSING SOLUTIONS

## SPOOL VALVES (HIGH VISCOSITY AND PRESSURE)



### SPOOL VALVES CFH20SS

The High Pressure Spool Valve is based on a balanced spool design to create a fast "ON/OFF" fluid dispensing function that is not affected by material input pressure. The spool action displaces a portion of the material back into the nozzle during shut off. This creates an automatic "suck-back" anti-drip feature. An oil chamber is provided for use above the upper seal to create an additional liquid seal that will prevent moisture from being carried onto the spool. The design facilitates easy maintenance without the need for special tools. The valve is designed to be opened by air pressure and closed by a return spring (single acting). A port is provided so that the valve may be connected for air closing without the spring (double acting).

The CFH20SS side ports can be rotated **in to** conveniently locate valve connections. The hardened spool slides in high quality seals and is suitable for use with materials having a viscosity of up to 3,000,000 cps at pressures of up to 2,500psi (172bar). Output is ¼ NPT allowing multiple types of tips to be used.

### FEATURES

- High output
- Handles higher fluid pressure than most of other valves
- Automatic suck-back after every dispense cycle
- Suitable with moisture sensitive materials



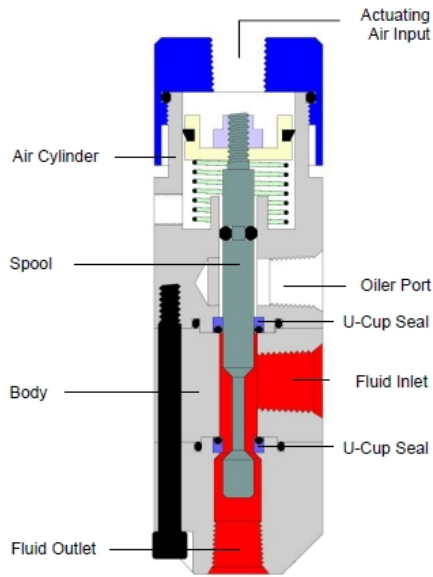
<b>Fluid Inlet Port:</b>	3/8" NPT Female
<b>Fluid Outlet Port:</b>	¼" NPT Female
<b>Aux Air Inlet Port:</b>	1/8" Female
<b>Min Air Pressure:</b>	70 psi (4.8bar)
<b>Max Fluid Pressure:</b>	2500 psi (172.4bar)
<b>Mounting Port:</b>	N/A
<b>Viscosity Range:</b>	1- 3 000 000cps
<b>Wetted Parts:</b>	303 SS, hard Chrome plated stainless steel, UHMWPE, EPR
<b>Operating Frequency:</b>	400+ cycles/min



MATERIALS: CONFORMAL COATINGS, ACRYLICS, URETHANES, SILICONES, RTV, BI-COMPONENT MATERIALS, ETC.

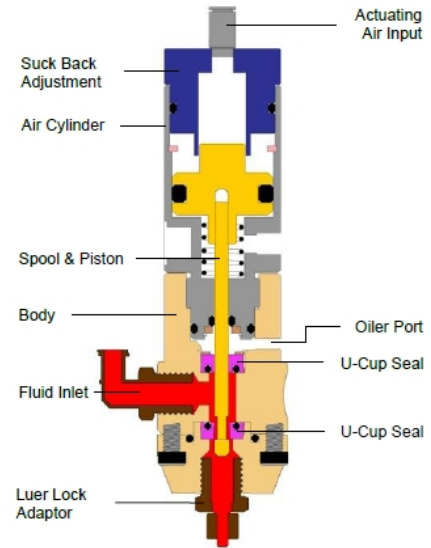
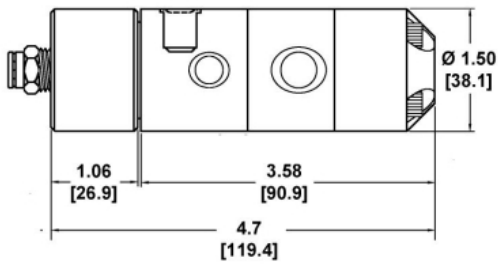


# SPOOL VALVES SPECIFICATIONS



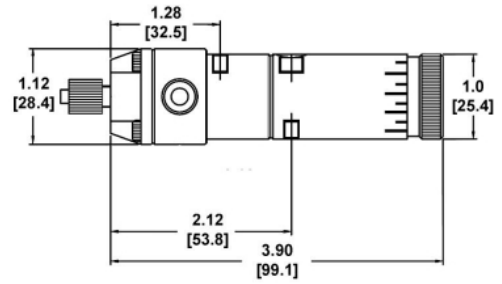
CFH22

Dimensions are in inches [mm]



CFH20SS

Dimensions are in inches [mm]



## INTERNATIONAL SALES DEPARTMENT

TEL. +34 925 258 073  
 FAX +34 925 581 457  
 coatflow@coatflow.com  
[www.coatflow.com](http://www.coatflow.com)  
[www.innomelt.com](http://www.innomelt.com)

LOCAL DISTRIBUTOR:

## OTHER COATFLOW SOLUTIONS

