

# SELECTIVE CONFORMAL COATING AND DISPENSING SOLUTIONS

## COATING VALVES



### COATING VALVE CFCV10

Needle valves are designed for precise application of low viscosity materials. These valves are designed for applications in which the application speed of the conformal coating is a fundamental parameter. The external control of the stroke of the piston makes it very easy for the operator to precisely adjust the flow of material. Total control of the coating cycle is achieved by adjusting the material flow and precise control in the pre-spray and post-spray provided by the **Coatflow** dispensing and varnishing systems. Maintenance is simplified by eliminating the annoying springs that wrap around the needle. Downtime is minimized by simply replacing a seal / seal during routine maintenance. The compact design and mounting holes allow for easy integration into automated applications.

### FEATURES

- Uniform coverage with curtain
- Application of thicknesses at high speeds
- Avoid the appearance of bubbles
- Avoid excessive application of materials
- Correct closing of material flow (does not drip)
- Adjustable material flow control
- Long useful life



### CFCV10

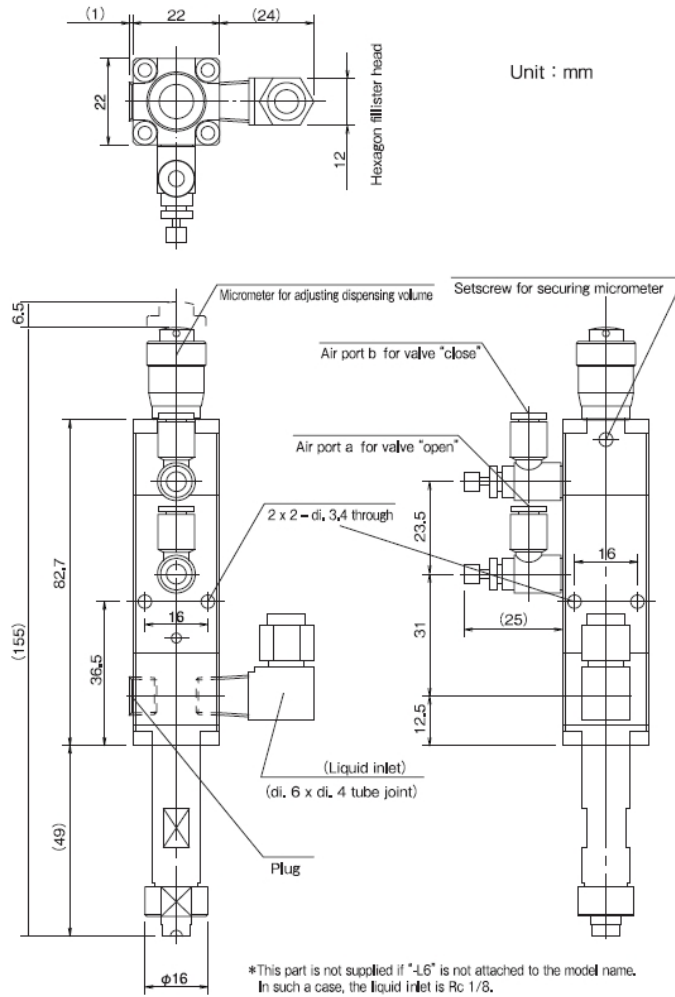
<b>Size W x L x H:</b>	22mm x 155mm
<b>Weight:</b>	237g
<b>Fluid Inlet:</b>	1/8" NPT
<b>Mounting:</b>	FLAT NOZZLE
<b>Maximum Fluid Pressure:</b>	0.5 Mpas( 5.1 Bar)
<b>Wetted part:</b>	Hardened tool steel, stainless steel, Poliacetal, ceramics
<b>Cycle Rate:</b>	Exceeds 400 cycles/minute
<b>Material Viscosity Range:</b>	1 - 100cps



MATERIALS: CONFORMAL COATINGS, ACRYLICS, URETHANES, SILICONES, RTV, BI-COMPONENT MATERIALS, ETC.



# COATING VALVES SPECIFICATIONS



## INTERNATIONAL SALES DEPARTMENT

TEL. +34 925 258 073  
 FAX +34 925 581 457  
 coatflow@coatflow.com  
[www.coatflow.com](http://www.coatflow.com)  
[www.innomelt.com](http://www.innomelt.com)

LOCAL DISTRIBUTOR:

## OTHER COATFLOW SOLUTIONS

